

Success at Nashville State

1,135 Degrees & Certificates Awarded in 2018-19

49.9% First-Year Retention Rate for the 2018 Cohort

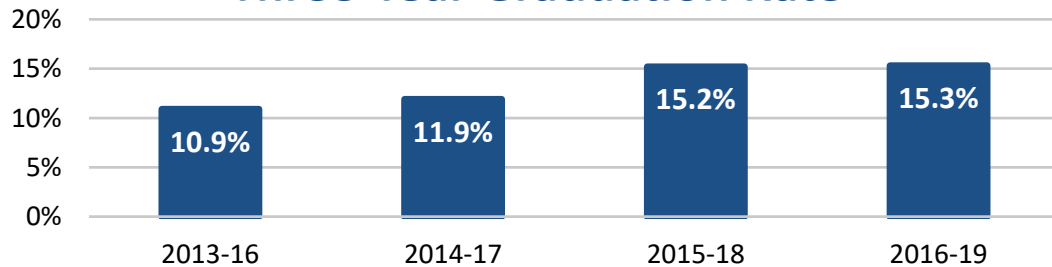
15.3% Three-Year Graduation Rate for the 2016 Cohort

First-Time, Full-Time Freshmen

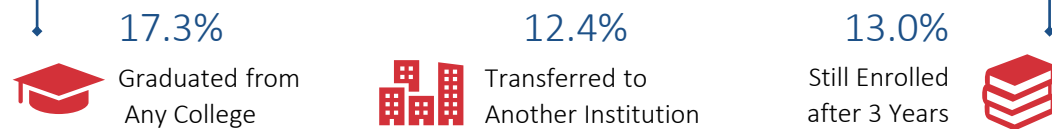
	Fall 2015	Fall 2016	Fall 2017	Fall 2018	Fall 2019
Total Cohort	1,822 students	1,513 students	1,312 students	1,376 students	1,381 students
White	59%	50%	46%	47%	43%
Black	26%	32%	35%	33%	32%
Hispanic	8%	9%	10%	11%	15%
Pell Recipients	65%	66%	69%	65%	68%
ACT Below 19	49%	53%	55%	49%	54%

The first-time, full-time cohort includes degree-seeking students who enroll in college for the first time in fall (or in the prior summer and continued in the fall) and attempted at least 12 hours.

Three-Year Graduation Rate

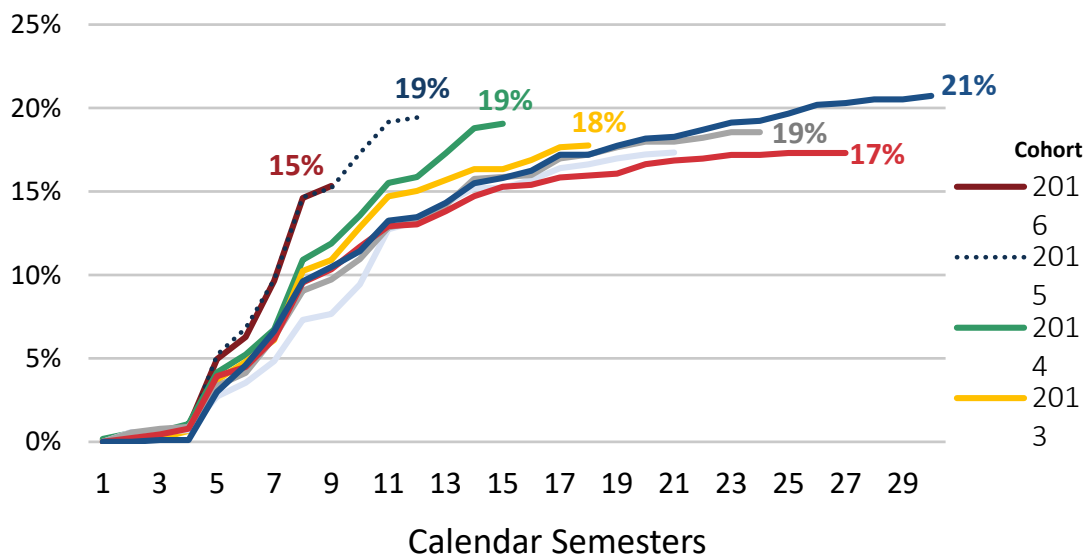


Success for the 2015 Freshman Cohort

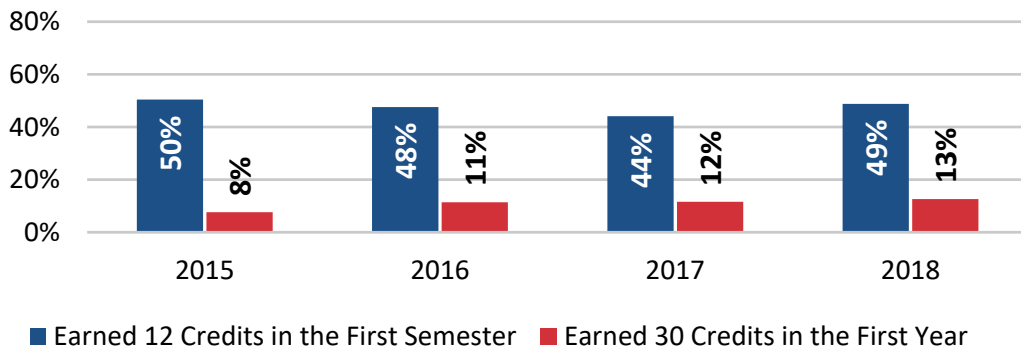


Success for the 2015 cohort includes the percent of students who earned a degree or certificate from any institution within or outside the TBR system, transferred to another institution, or were still enrolled as of spring/summer 2018.

Cumulative Graduation Rate

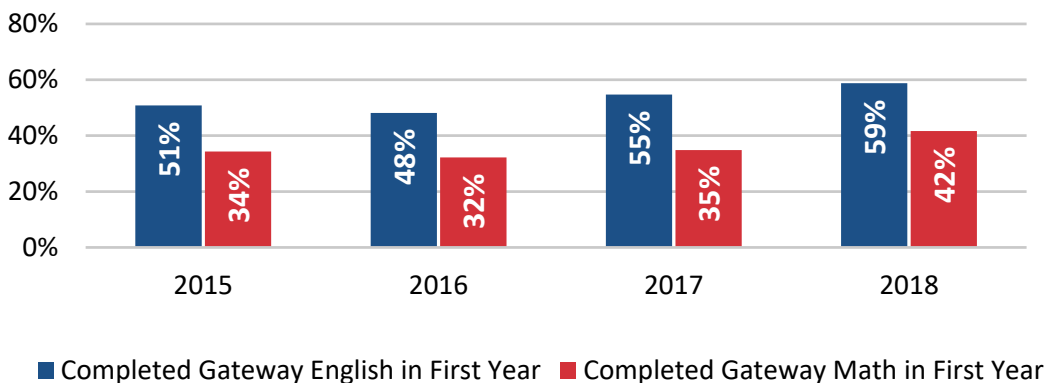


First-Year Momentum



Hours earned in the first year includes college-level and learning support hours in the fall, spring, and summer terms for students in the first-time, full-time freshman cohort.

Gateway Course Completion



Gateway courses are 1000-level English and Math courses. Year 1 includes courses in fall, spring, and summer. Completion rates are based on course outcomes for first-time-ever-in-college students.

Tennessee Promise: The 2017 Cohort

833 Nashville State students in the Third Cohort of Tennessee Promise

46.9% Overall Success Rate after Five Semesters of Promise Eligibility

Success for the 2017 Promise Cohort

18.0%
Graduated from Any College

7.8%
Transferred to Another Institution

21.1%
Still Enrolled after 3 Years

Success rates measure the percent of students who earned a degree or certificate, transferred to another institution, or were still enrolled at a TBR community college after five semesters. Promise success rates include data from the TBR student information system, THEC/TSAC, and the National Student Clearinghouse.

Tennessee Reconnect in 2018-19

1,610

Tennessee Reconnect students enrolled at Nashville State in fall 2018

55%

of incoming Reconnect students were new to higher education or were returning after at least a semester away

131

Reconnect students who enrolled in fall 2018 at Nashville State graduated in fall 2018 or spring 2019