

KNOW THIS

Too many entering freshmen need remediation.

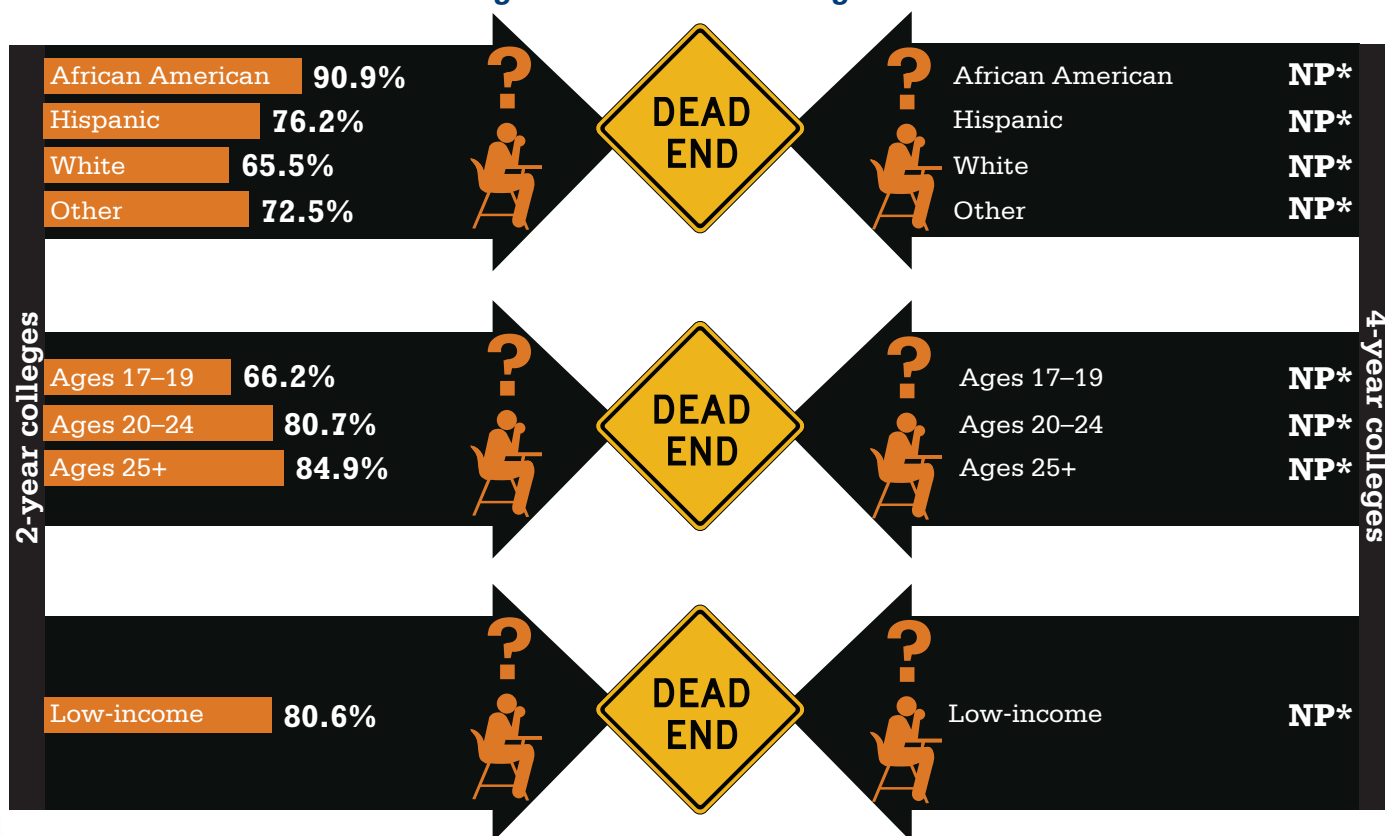
71.2% of those entering a 2-year college enrolled in remediation

NP* of those entering a 4-year college enrolled in remediation



If you're African American, Hispanic, or a low-income student, you're more likely to be headed toward the remediation dead end.

Percentage of students needing remediation



DO THIS!

Strengthen high school so that students are actually prepared for college.

KNOW THIS

Very few make it to graduation day.

2-Year Colleges

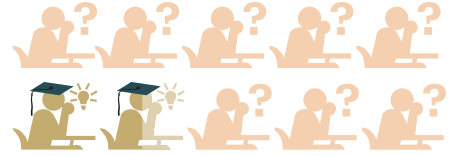
71.2% of freshmen enrolled in remediation. **Of those ...**



46.5%
Complete remediation



21.0%
Complete remediation and associated college-level courses in two years



12.6%
Graduate within 3 years

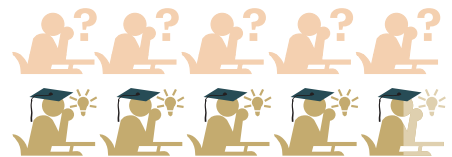
African American	32.0%	8.9%	Disaggregated data for this cohort are not yet available.
Hispanic	49.3%	24.6%	
White	50.4%	24.9%	
Other	50.5%	26.2%	
17-19	48.1%	22.2%	
20-24	37.0%	15.1%	
25+	46.0%	22.2%	
Low-income	41.9%	18.3%	

4-Year Colleges

NP* of freshmen enrolled in remediation. **Of those ...**

NP*
Complete remediation

NP*
Complete remediation and associated college-level courses in two years



44.4%
Graduate within 6 years

African American	NP*	NP*	Disaggregated data for this cohort are not yet available.
Hispanic	NP*	NP*	
White	NP*	NP*	
Other	NP*	NP*	
17-19	NP*	NP*	
20-24	NP*	NP*	
25+	NP*	NP*	
Low-income	NP*	NP*	

DO THIS!

Put students into credit-bearing gateway courses with built-in supports.

NP* = The state did not provide data for this metric.