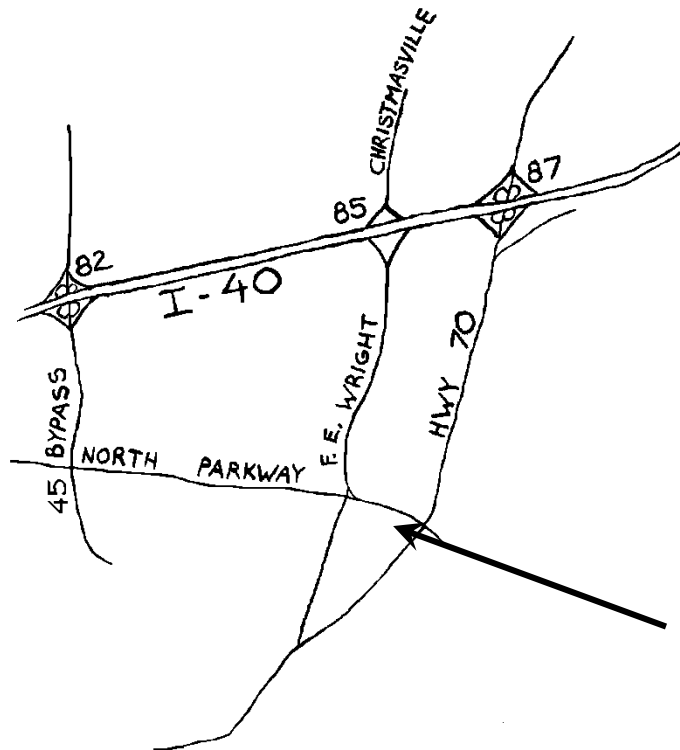


MAP TO THE BID OPENING LOCATION

in Jackson



Suggested route from the East:

- Take I-40 westbound Exit 87 onto U.S.70 south towards Jackson
- At about 5 km, turn right (west) onto North Parkway

Suggested route from the West:

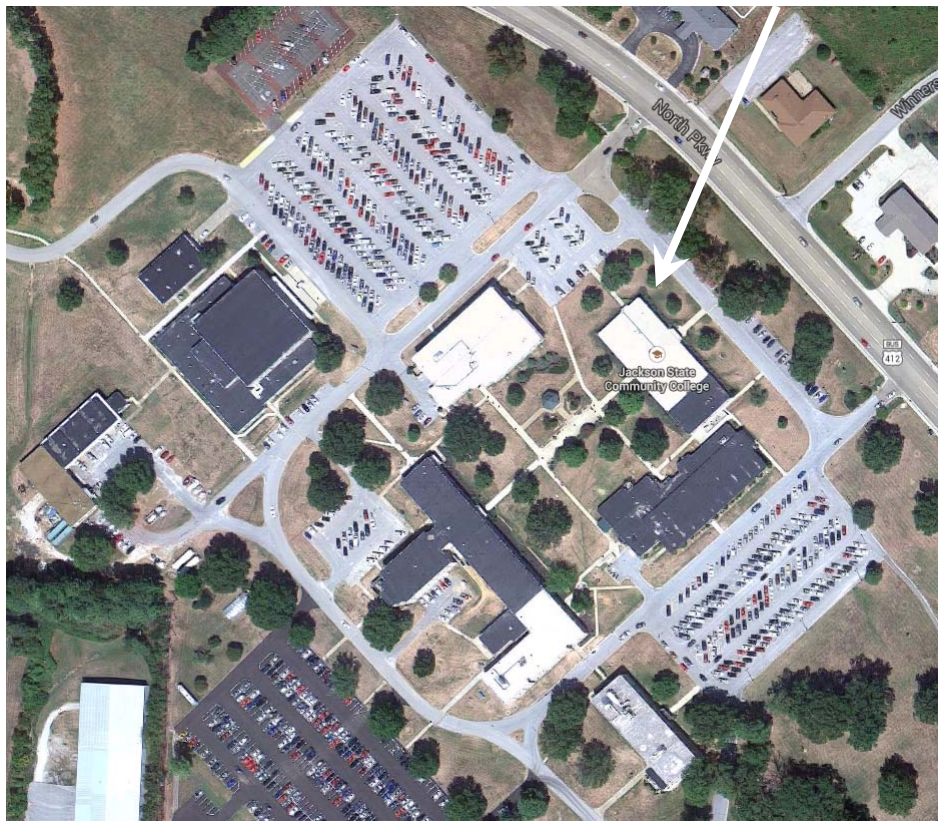
- Take I-40 eastbound Exit 85 Christmasville Road onto F.E.Wright Drive south towards Jackson.
- At about 4.8 km, turn left (east) onto North Parkway

JSCC entrance on south side of North Parkway, across from Baptist Student Center

Free Parking is available in front of Administration Building, which is in center front of campus.

Bids will be received at:

Office of the Vice President for Financial Affairs
Room 131D Administration Building
Jackson State Community College (JSCC)
2046 North Parkway
Jackson, Tennessee 38301-3797



Bids sent by mail should be directed to the attention of:

Lisa Crow

(731) 425 - 2655