



Committee on Finance and Business Operations
Wednesday, May 27, 2015

- 1) Call to Order
- 2) Roll Call
- 3) Remarks by Chairperson/Chancellor
- 4) Background Information
- 5) Review of Proposed Student Revenue Increase Levels
- 6) Review of Recommended Changes in Maintenance Fees and Tuition
- 7) Review of Incidental Fee Request
- 8) Next Steps



TENNESSEE BOARD OF REGENTS
STATE UNIVERSITY & COMMUNITY COLLEGE SYSTEM OF TENNESSEE

Committee on Finance and Business Operations

May 27, 2015

Agenda

- Background Information
- Review of Proposed Student Revenue Increase Levels
- Review of Recommended Changes in Maintenance Fees and Tuition
- Review of Incidental Fee Request
- Next Steps



TBR INSTITUTIONAL PEER GROUPS

May 15, 2015

TENNESSEE BOARD OF REGENTS
STATE UNIVERSITY & COMMUNITY COLLEGE SYSTEM OF TENNESSEE



Peer Institutions

APSU

Appalachian State
Florida A & M University
Jacksonville State University
McNeese State University
Morehead State University
Morgan State University
North Carolina A&T University
North Carolina Central University
Salisbury University
Sam Houston State University
Texas A&M University-Corpus Christi
Valdosta State University

ETSU

Appalachian State
East Carolina University
Eastern Kentucky University
Florida A & M University
Florida Atlantic University
Old Dominion University
The University of South Alabama
The University of Texas at Arlington
The University of Texas at El Paso
University of Arkansas Little Rock
University of North Carolina at Greensboro
University of North Carolina, Charlotte

MTSU

Florida Atlantic University
Florida International University
George Mason University
Georgia Southern
Georgia State University
Old Dominion University
The University of Texas at Arlington
University of Central Florida
University of New Orleans
University of North Carolina at Greensboro
University of North Texas
University of Southern Mississippi



Peer Institutions

TSU

Alcorn State University
Delaware State University
Florida A & M University
Georgia State University
North Carolina A&T University
Northern Kentucky University
Old Dominion University
Sam Houston State University
South Carolina State University
University of Arkansas, Fayetteville
University of North Carolina, Charlotte
Virginia State University

TTU

Appalachian State
Florida A & M University
Louisiana Tech University
Morgan State University
Murray State University
North Carolina A&T University
Sam Houston State University
The University of South Alabama
The University of Texas at El Paso
University of Alabama-Huntsville
University of North Florida
Western Carolina University

UOM

Florida International University
George Mason University
Georgia State University
Texas Tech University
The University of Houston
University of Alabama
University of Arkansas, Fayetteville
University of Louisville
University of Oklahoma Norman Campus
University of South Carolina, Columbia
University of South Florida
Virginia Commonwealth University



Peer Institutions

Community Colleges

Anne Arundel Community College

Bluegrass Community College

Central Piedmont Community College

Delaware Technical And Community College-Owens

Delgado Community College

Florence Darlington Technical College

James H Faulkner State Community College

Mclennan Community College

Middle Georgia College

National Park Community College

Palm Beach Community College

Rose State College

Southern West Virginia Community And Techn College

Southwest Mississippi Community College

Virginia Western Community College



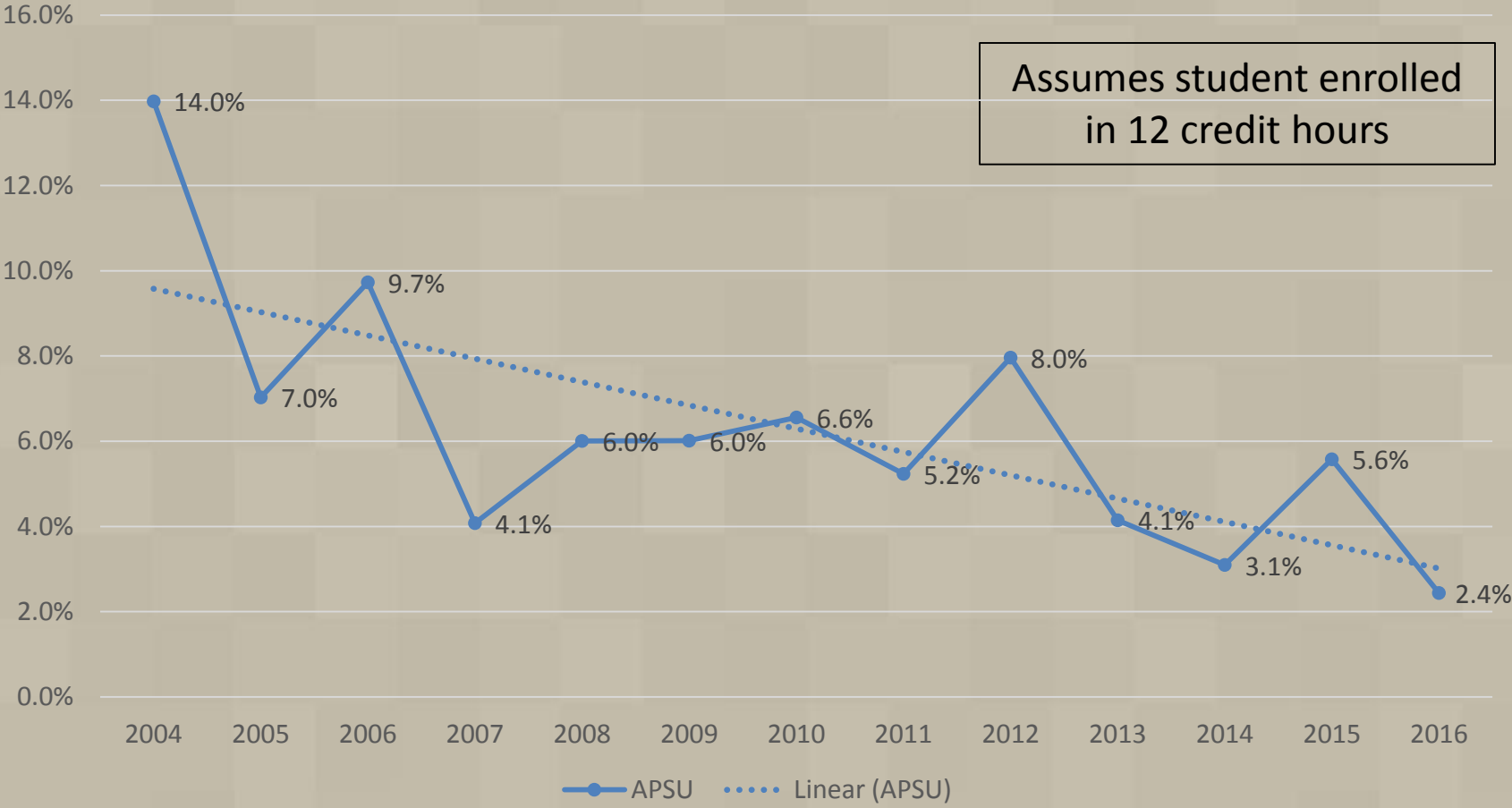
MAINTENANCE FEE INCREASE HISTORY BY INSTITUTION

May 15, 2015

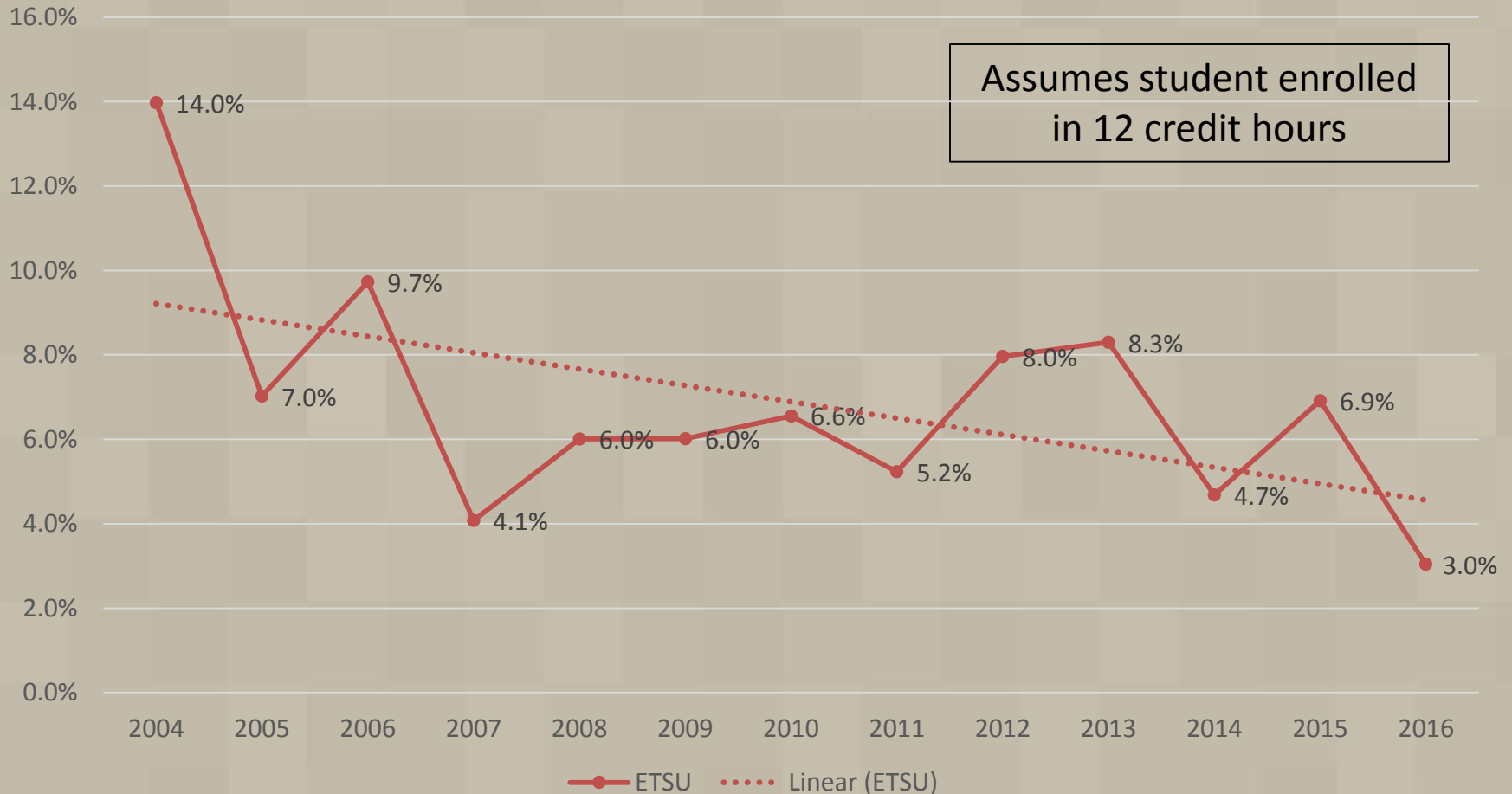
TENNESSEE BOARD OF REGENTS
STATE UNIVERSITY & COMMUNITY COLLEGE SYSTEM OF TENNESSEE



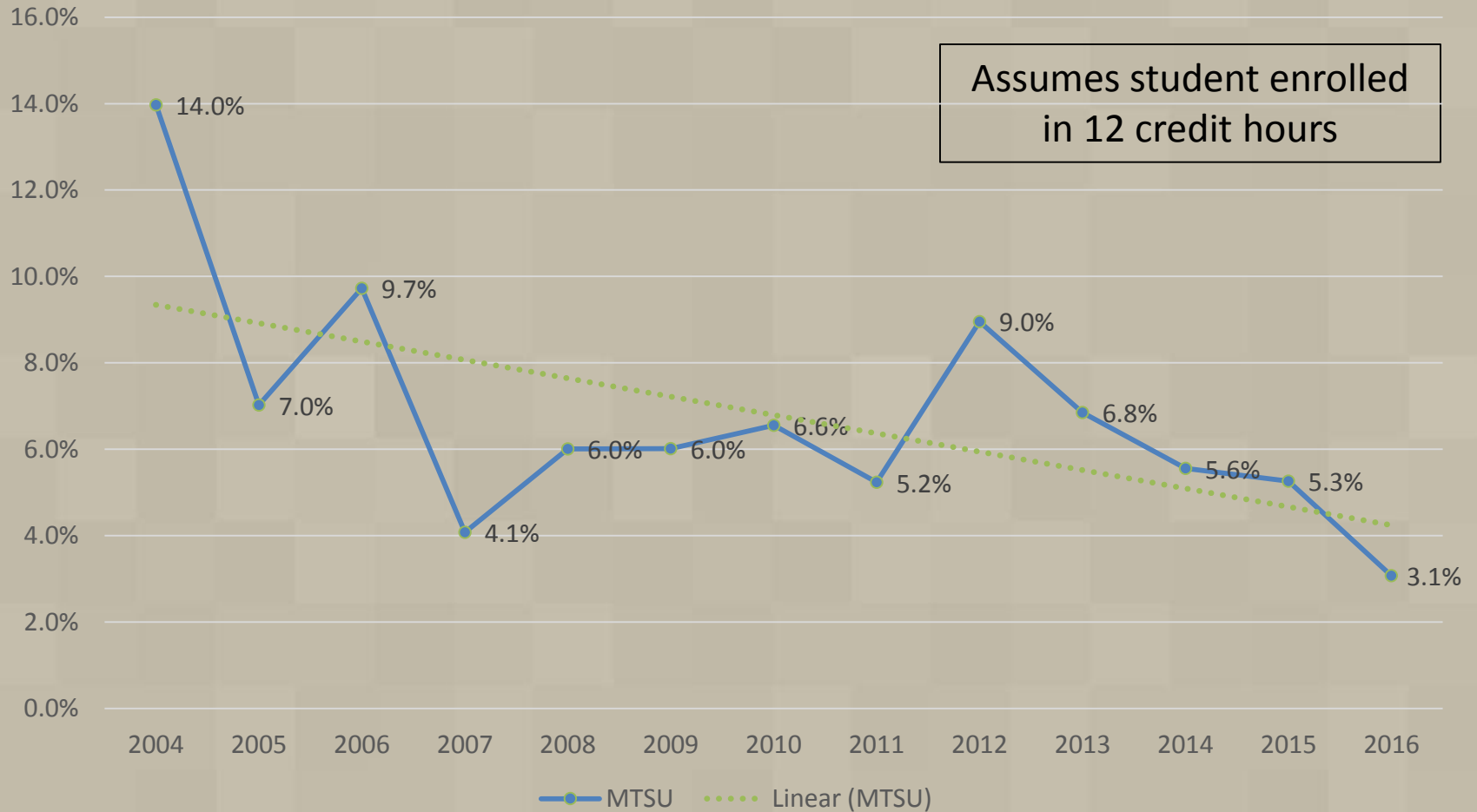
APSU Maintenance Fee History



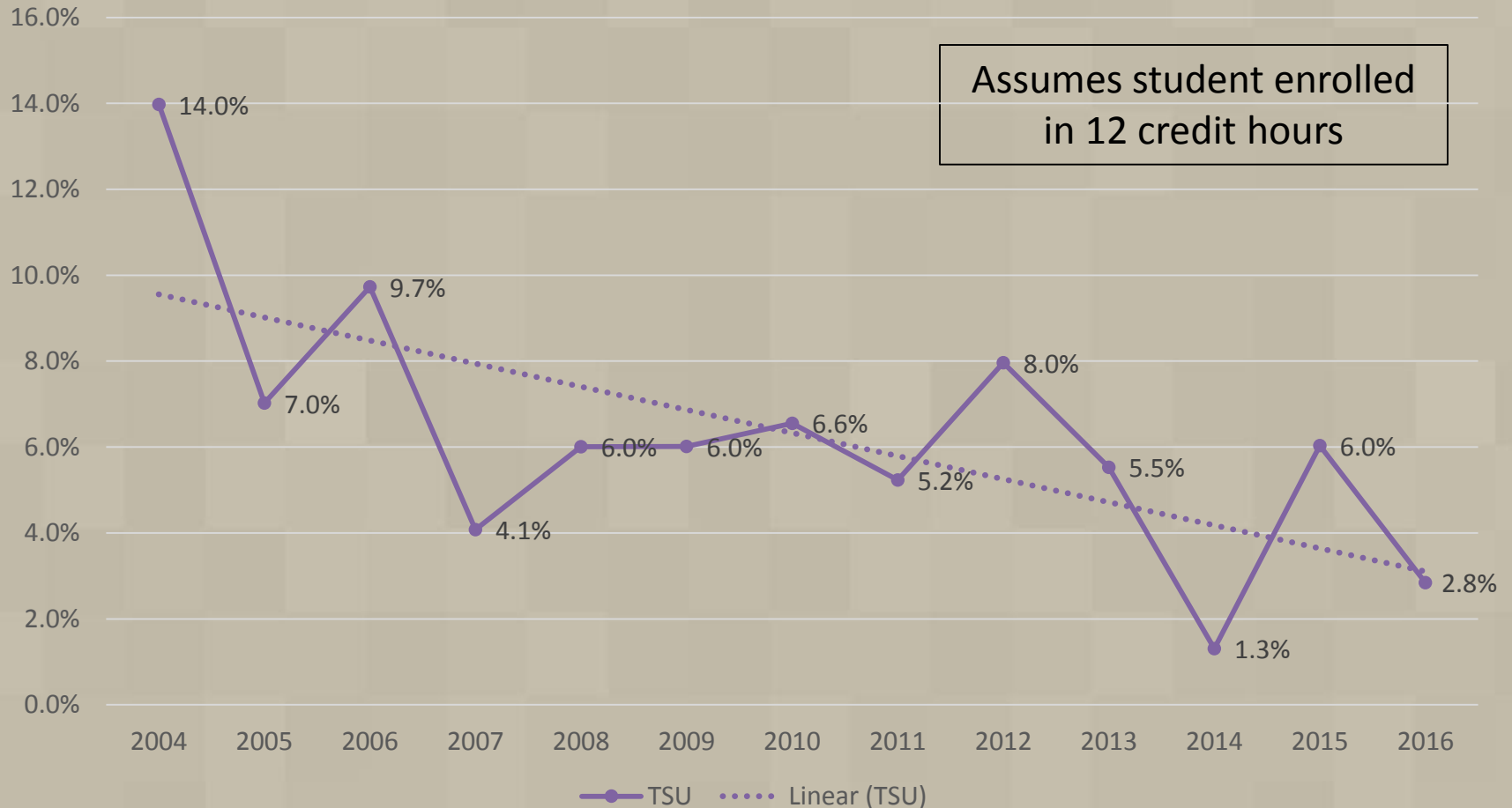
ETSU Maintenance Fee History



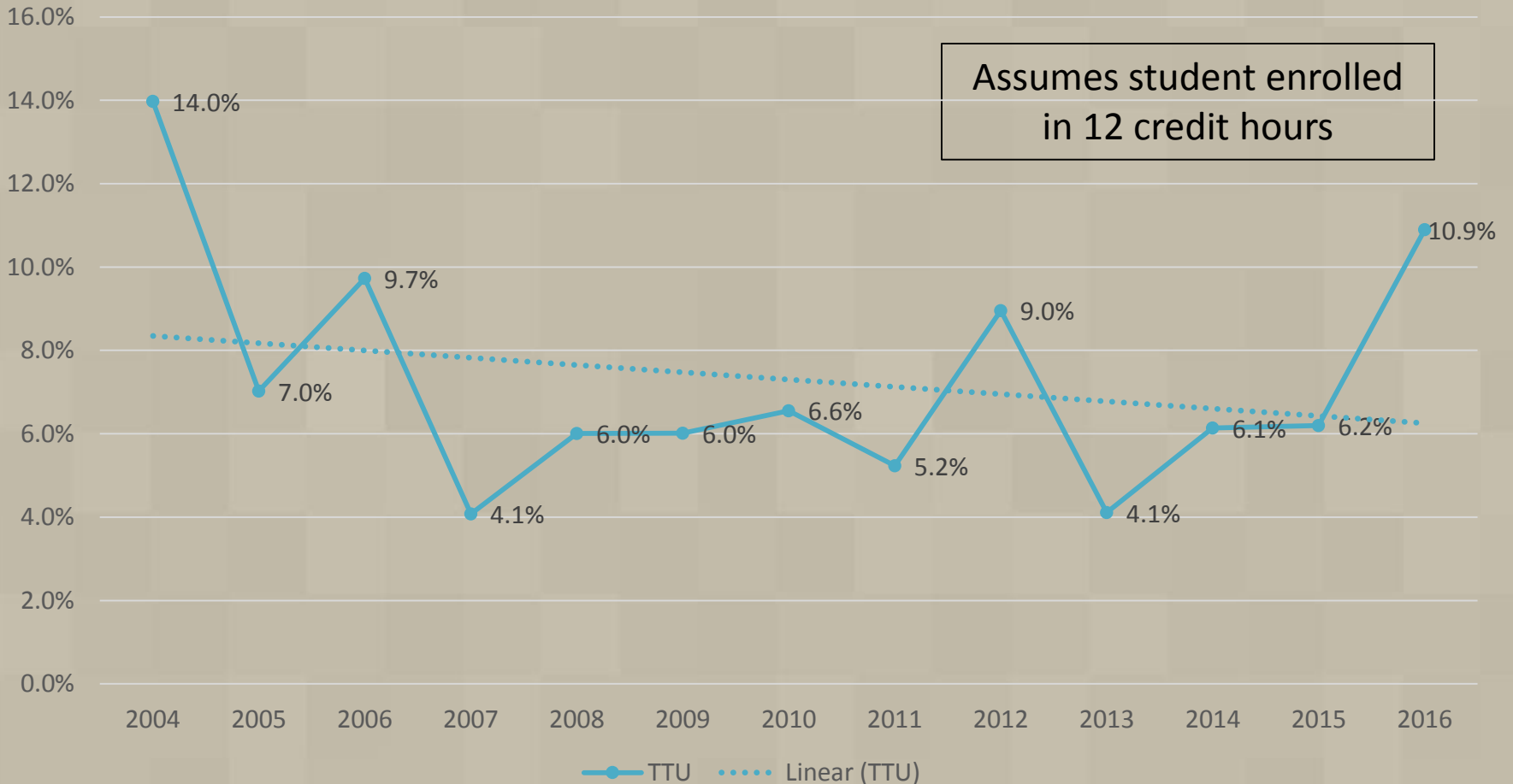
MTSU Maintenance Fee History



TSU Maintenance Fee History



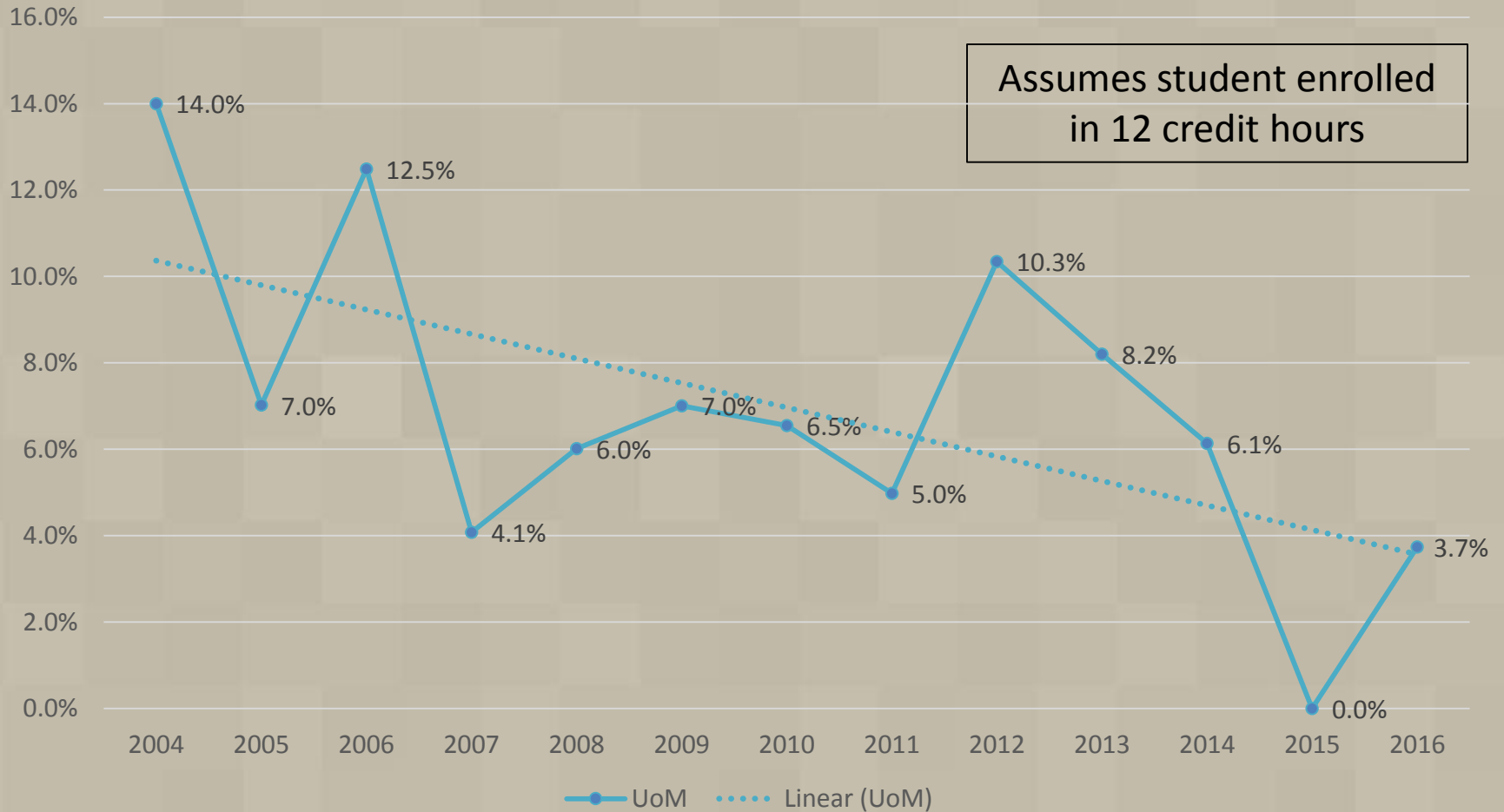
TTU Maintenance Fee History (1)



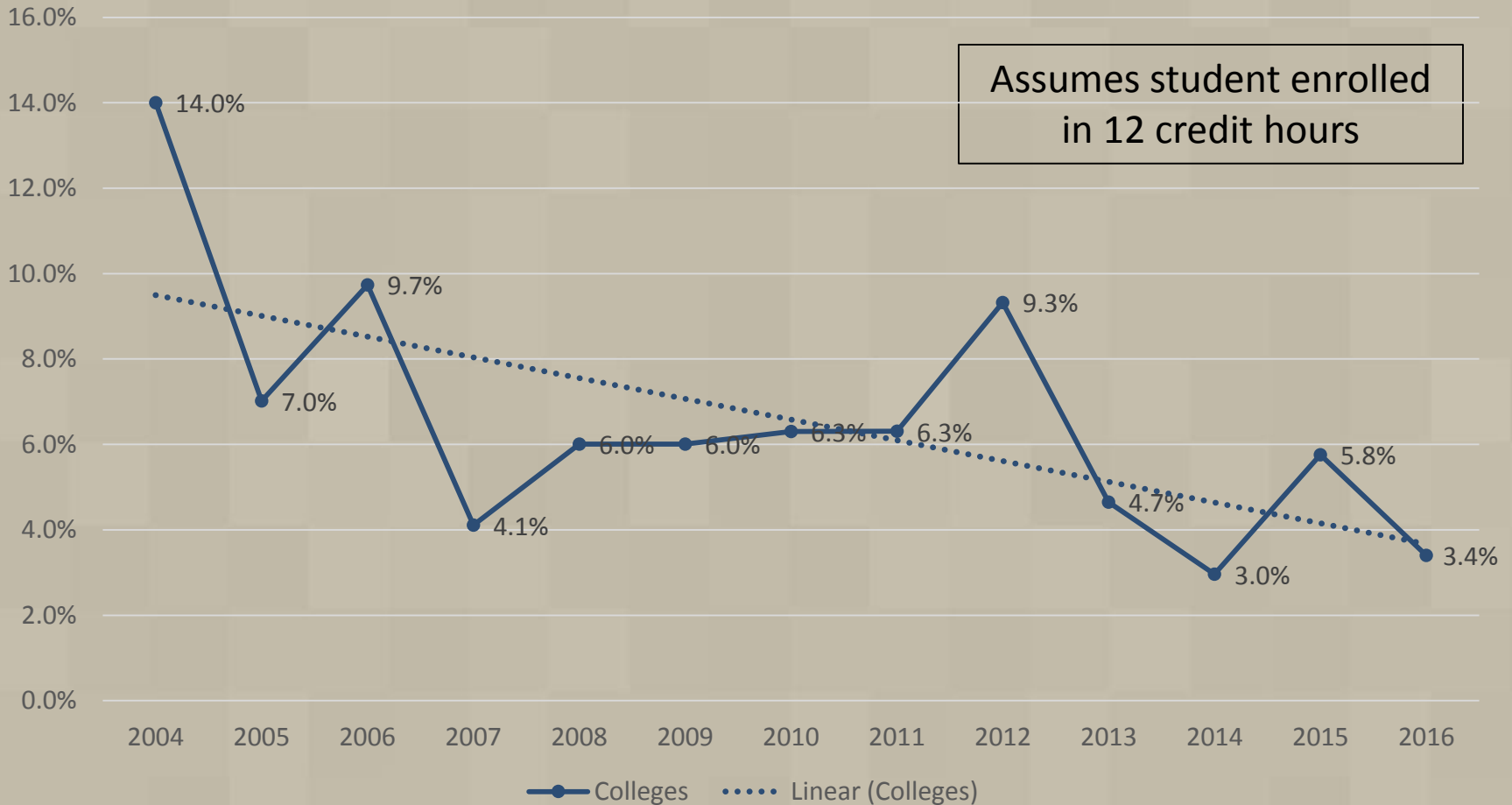
(1) Increase for 2016 includes impact of eliminating certain mandatory fees and adjusting maintenance fees to fund associated costs on a revenue neutral basis.



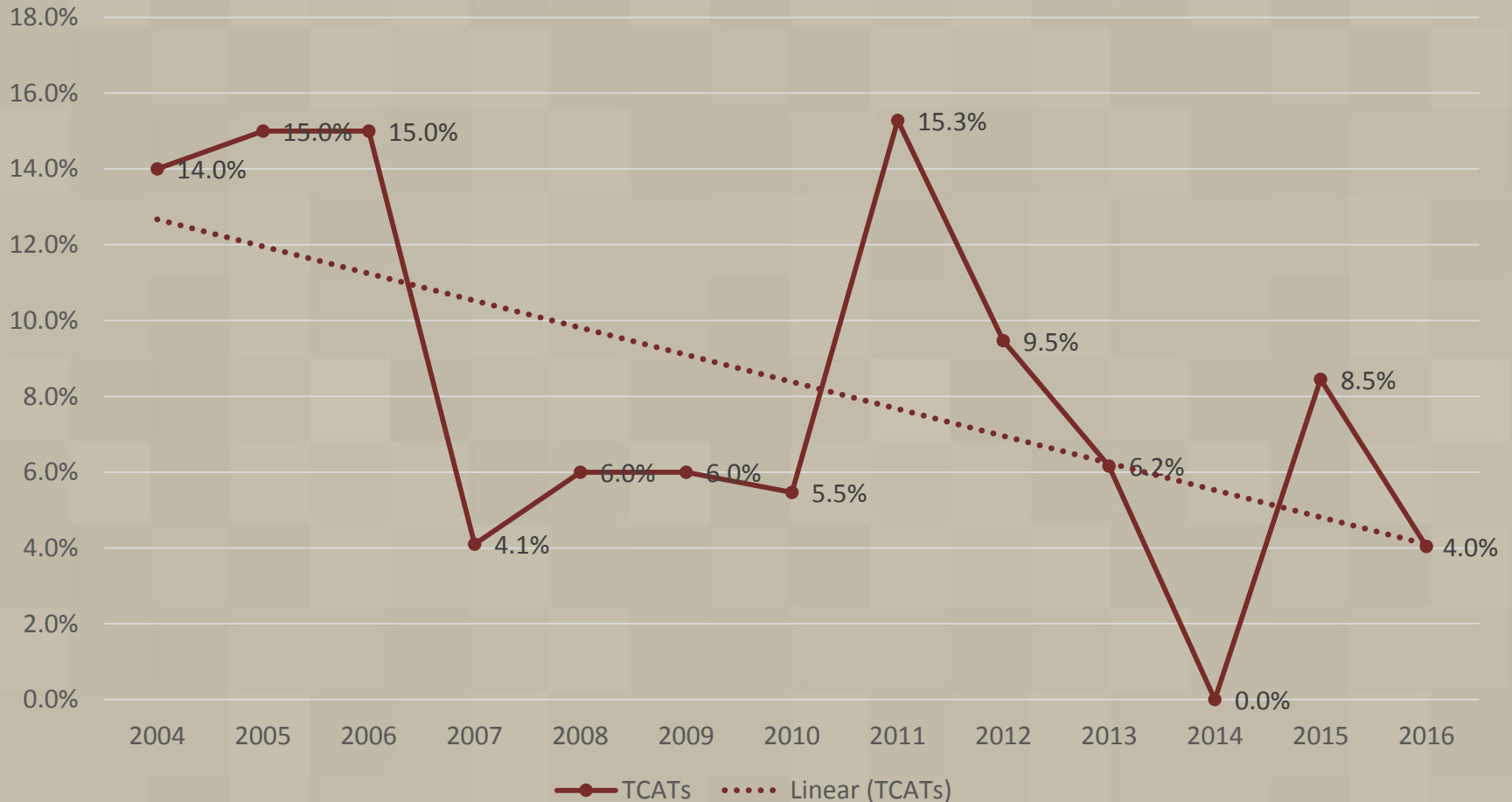
UoM Maintenance Fee History



College's Maintenance Fee History



TCATs Maintenance Fee History



REVIEW OF PROPOSED STUDENT REVENUE INCREASE LEVELS

May 15, 2015

TENNESSEE BOARD OF REGENTS
STATE UNIVERSITY & COMMUNITY COLLEGE SYSTEM OF TENNESSEE



Summary of Recommended Student Revenue Increases

Institution	2.0% Salary Pool	Fixed Cost Increases	Institutional Requests	Subtotal - Institutional	Other	Total Rec'ded Revenue Adjustment
APSU	1.4%	0.9%	0.0%	2.3%	0.0%	2.3%
ETSU	1.5%	1.0%	1.0%	3.5%	0.0%	3.5%
MTSU	1.4%	1.0%	1.0%	3.4%	0.0%	3.4%
TSU	1.2%	0.9%	0.9%	3.0%	0.0%	3.0%
TTU	1.3%	1.0%	1.5%	3.8%	0.0%	3.8%
UoM	1.8%	1.5%	0.7%	4.0%	0.0%	4.0%
CCs	1.4%	0.9%	1.0%	3.3%	0.3%	3.6%
TCATs	1.6%	1.2%	1.2%	4.0%	0.0%	4.0%



Summary of Recommended Student Revenue Increases

Institution	2.0% Salary Pool	Fixed Cost Increases	Institutional Requests	Subtotal - Institutional	Other	Total Rec'ded Revenue Adjustment
APSU	\$ 778,000	\$ 476,000	\$ -	\$ 1,254,000	\$ -	\$ 1,254,000
ETSU	\$ 1,276,200	\$ 836,500	\$ 836,500	\$ 2,949,200	\$ -	\$ 2,949,200
MTSU	\$ 1,980,600	\$ 1,353,700	\$ 1,353,700	\$ 4,688,000	\$ -	\$ 4,688,000
TSU	\$ 848,700	\$ 585,000	\$ 585,000	\$ 2,018,700	\$ -	\$ 2,018,700
TTU	\$ 1,003,200	\$ 767,400	\$ 1,178,100	\$ 2,948,700	\$ -	\$ 2,948,700
UoM	\$ 2,376,400	\$ 1,994,900	\$ 947,300	\$ 5,318,600	\$ -	\$ 5,318,600
CCs	\$ 3,206,700	\$ 2,068,600	\$ 2,298,400	\$ 7,573,700	\$ 600,000	\$ 8,173,700
TCATs	\$ 432,600	\$ 324,400	\$ 330,200	\$ 1,087,200	\$ -	\$ 1,087,200
Amount	\$ 11,902,400	\$ 8,406,500	\$ 7,529,200	\$ 27,838,100	\$ 600,000	\$ 28,438,100



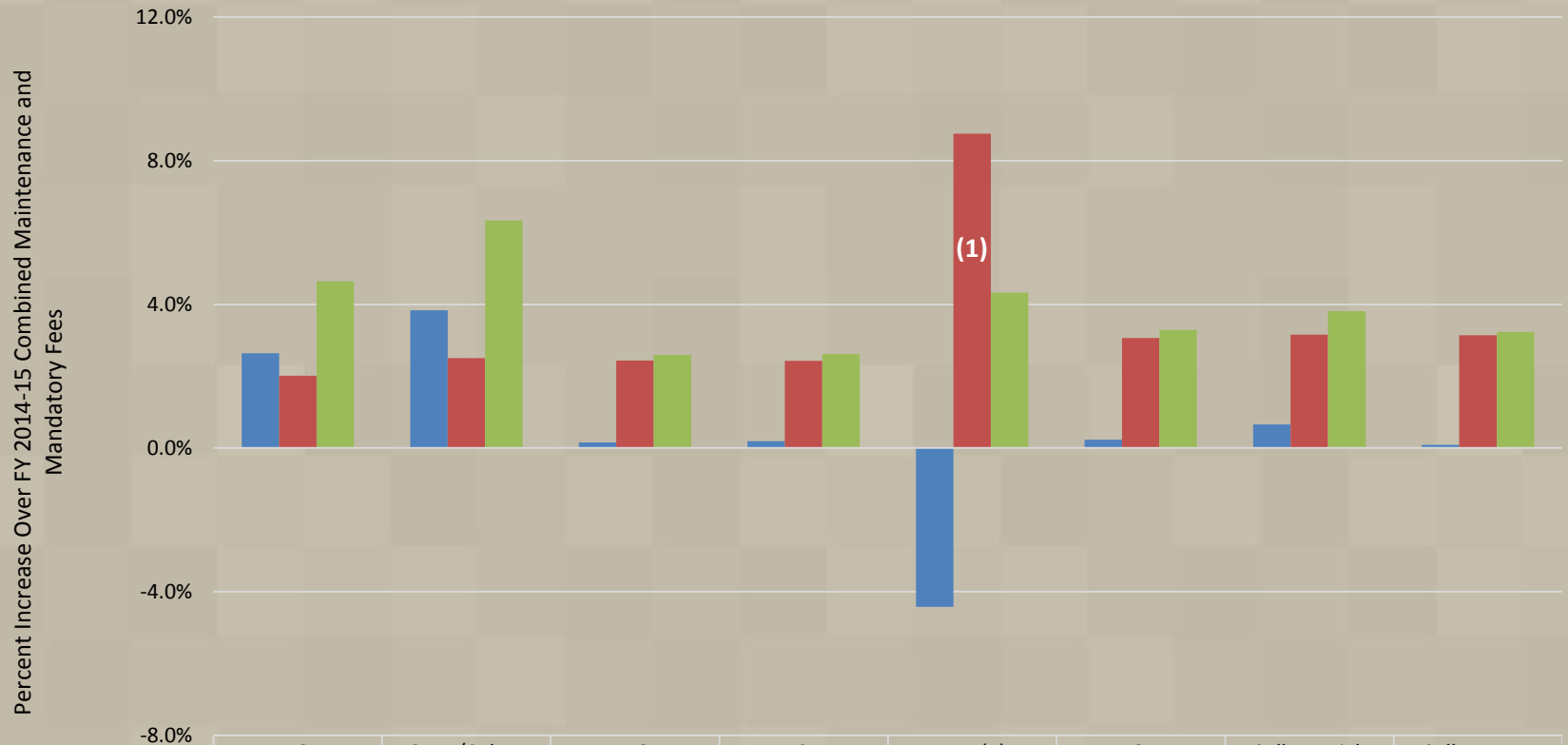
RECOMMENDED CHANGES IN MAINTENANCE FEE AND TUITION RATES

May 15, 2015

TENNESSEE BOARD OF REGENTS
STATE UNIVERSITY & COMMUNITY COLLEGE SYSTEM OF TENNESSEE



Projected Impact of Recommended Fee Adjustments



	APSU	ETSU w/Culp Fee	MTSU	TSU	TTU (1)	UOM	College High	College Avg.
■ Mandatory Fee Changes Only	2.6%	3.8%	0.2%	0.2%	-4.4%	0.2%	0.7%	0.1%
■ Maintenance Fee Changes Only	2.0%	2.5%	2.4%	2.4%	8.8%	3.1%	3.2%	3.1%
■ Combined Changes	4.6%	6.3%	2.6%	2.6%	4.3%	3.3%	3.8%	3.2%

(1) TTU includes impact of eliminating certain mandatory fees and adjusting maintenance fees to fund associated costs on a revenue neutral basis.



Projected Impact of Recommended Fee Adjustments (1)

Institution	FY 2014-15			FY 2015-16 Total With Only Mandatory Fee Changes			FY 2015-16 Total With Only Maintenance Fee Changes			FY 2015-16 Total With Combined Fee Changes		
	Mandatory		Total	Increase			Increase			Increase		
	Maint. Fees	Fees		Amount	Percent	Total	Amount	Percent	Total	Amount	Percent	Total
APSU	\$ 5,904	\$ 1,264	\$ 7,168	\$ 189	2.6%	\$ 7,357	\$ 144	2.0%	\$ 7,312	\$ 333	4.6%	\$ 7,501
ETSU	6,312	1,355	7,667	4	0.1%	7,671	192	2.5%	7,859	196	2.6%	7,863
MTSU	6,240	1,636	7,876	12	0.2%	7,888	192	2.4%	8,068	204	2.6%	8,080
TSU	5,904	1,026	6,930	13	0.2%	6,943	168	2.4%	7,098	181	2.6%	7,111
TTU (2)	6,168	1,511	7,679	(340)	-4.4%	7,339	672	8.8%	8,351	332	4.3%	8,011
UOM	7,056	1,563	8,619	20	0.2%	8,639	264	3.1%	8,883	284	3.3%	8,903
CHSCC	\$ 3,528	\$ 325	\$ 3,853	\$ -	0.0%	\$ 3,853	\$ 120	3.1%	\$ 3,973	\$ 120	3.1%	\$ 3,973
CLSCC	3,528	283	3,811	16	0.4%	3,827	120	3.1%	3,931	136	3.6%	3,947
COSCC	3,528	271	3,799	-	0.0%	3,799	120	3.2%	3,919	120	3.2%	3,919
DSCC	3,528	299	3,827	-	0.0%	3,827	120	3.1%	3,947	120	3.1%	3,947
JSCC	3,528	285	3,813	-	0.0%	3,813	120	3.1%	3,933	120	3.1%	3,933
MSCC	3,528	276	3,804	25	0.7%	3,829	120	3.2%	3,924	145	3.8%	3,949
NASCC	3,528	225	3,753	-	0.0%	3,753	120	3.2%	3,873	120	3.2%	3,873
NESCC	3,528	287	3,815	-	0.0%	3,815	120	3.1%	3,935	120	3.1%	3,935
PSCC	3,528	339	3,867	-	0.0%	3,867	120	3.1%	3,987	120	3.1%	3,987
RSCC	3,528	303	3,831	-	0.0%	3,831	120	3.1%	3,951	120	3.1%	3,951
STCC	3,528	315	3,843	-	0.0%	3,843	120	3.1%	3,963	120	3.1%	3,963
VSCC	3,528	273	3,801	4	0.1%	3,805	120	3.2%	3,921	124	3.3%	3,925
WSCC	3,528	288	3,816	-	0.0%	3,816	120	3.1%	3,936	120	3.1%	3,936
ECOP	\$ 32,710	\$ 1,310	\$ 34,020	\$ 4	0.0%	\$ 34,024	\$ 1,308	3.8%	\$ 35,328	\$ 1,312	3.9%	\$ 35,332
ECOM	29,160	1,885	31,045	4	0.0%	31,049	1,166	3.8%	32,211	1,170	3.8%	32,215
UOM-Law	15,992	1,455	17,447	20	0.1%	17,467	320	1.8%	17,767	340	1.9%	17,787

(1) All Amounts Annualized - Based on 12 hour enrollment for Fall and Spring semesters

(2) TTU includes impacts of shifting certain mandatory fees into maintenance fees on a revenue neutral basis.



Austin Peay State University

	FY 2014-15		FY 2015-16	
	Base Hours	Hours > Base	Base Hours	Hours > Base
Undergraduate				
In-State	\$ 246	\$ 49	\$ 252	\$ 50
Incr. Amount			\$ 6	\$ 1
Incr. Percent			2.4%	2.0%
Out-of-State	\$ 604	\$ 120	\$ 618	\$ 123
Incr. Amount			\$ 14	\$ 3
Incr. Percent			2.3%	2.5%
Graduate				
In-State	\$ 395	\$ 79	\$ 404	\$ 81
Incr. Amount			\$ 9	\$ 2
Incr. Percent			2.3%	2.5%
Out-of-State	\$ 665	\$ 133	\$ 680	\$ 136
Incr. Amount			\$ 15	\$ 3
Incr. Percent			2.3%	2.3%
Regents On-line Degree Program				
Undergraduate & Graduate	\$ 98	\$ 98	\$ 101	\$ 101
E-Rate				
Undergraduate	\$ 123	\$ 123	\$ 126	\$ 126
Graduate	\$ 198	\$ 198	\$ 202	\$ 202



East Tennessee State University

	FY 2014-15		FY 2015-16	
	Base Hours	Hours > Base	Base Hours	Hours > Base
Undergraduate				
In-State	\$ 263	\$ 53	\$ 271	\$ 54
Incr. Amount			\$ 8	\$ 1
Incr. Percent			3.0%	1.9%
Out-of-State	\$ 681	\$ 137	\$ 701	\$ 141
Incr. Amount			\$ 20	\$ 4
Incr. Percent			2.9%	2.9%
Graduate				
In-State	\$ 422	\$ 84	\$ 434	\$ 87
Incr. Amount			\$ 12	\$ 3
Incr. Percent			2.8%	3.6%
Out-of-State	\$ 751	\$ 151	\$ 773	\$ 155
Incr. Amount			\$ 22	\$ 4
Incr. Percent			2.9%	2.6%
Regents On-line Degree Program				
Undergraduate & Graduate	\$ 105	\$ 105	\$ 108	\$ 108
E-Rate				
Undergraduate	\$ 132	\$ 132	\$ 136	\$ 136
Graduate	\$ 211	\$ 211	\$ 217	\$ 217



ETSU Global Sports Leadership Program

- Recommend approval of proposal to create the following specific maintenance and tuition fees for this program

Hourly Maintenance Fee (a)	\$575
Hourly Non-Resident Tuition	\$55
Hourly Non-Resident Maintenance & Tuition	\$630
Length of the Degree Program	2½ years
Total Program Cost	
Resident Student	\$39,100
Non-Resident Student	\$42,840
(a) Maintenance fee does not change for duration of cohort program (2½ year program)	



Middle Tennessee State University

	FY 2014-15		FY 2015-16	
	Base Hours	Hours > Base	Base Hours	Hours > Base
Undergraduate				
In-State	\$ 260	\$ 52	\$ 268	\$ 54
Incr. Amount			\$ 8	\$ 2
Incr. Percent			3.1%	3.8%
Out-of-State	\$ 677	\$ 136	\$ 697	\$ 140
Incr. Amount			\$ 20	\$ 4
Incr. Percent			3.0%	2.9%
Graduate				
In-State	\$ 420	\$ 84	\$ 432	\$ 86
Incr. Amount			\$ 12	\$ 2
Incr. Percent			2.9%	2.4%
Out-of-State	\$ 743	\$ 148	\$ 765	\$ 152
Incr. Amount			\$ 22	\$ 4
Incr. Percent			3.0%	2.7%
Regents On-line Degree Program				
Undergraduate & Graduate	\$ 104	\$ 104	\$ 107	\$ 107
E-Rate				
Undergraduate	\$ 130	\$ 130	\$ 134	\$ 134
Graduate	\$ 210	\$ 210	\$ 216	\$ 216



Tennessee State University

	FY 2014-15		FY 2015-16	
	Base Hours	Hours > Base	Base Hours	Hours > Base
Undergraduate				
In-State	\$ 246	\$ 49	\$ 253	\$ 51
Incr. Amount			\$ 7	\$ 2
Incr. Percent			2.8%	4.1%
Out-of-State	\$ 530	\$ 106	\$ 530	\$ 106
Incr. Amount			\$ -	\$ -
Incr. Percent			0.0%	0.0%
Graduate				
In-State	\$ 397	\$ 79	\$ 409	\$ 82
Incr. Amount			\$ 12	\$ 3
Incr. Percent			3.0%	3.8%
Out-of-State	\$ 582	\$ 116	\$ 582	\$ 116
Incr. Amount			\$ -	\$ -
Incr. Percent			0.0%	0.0%
Regents On-line Degree Program				
Undergraduate & Graduate	\$ 98	\$ 98	\$ 101	\$ 101
E-Rate				
Undergraduate	\$ 123	\$ 123	\$ 127	\$ 127
Graduate	\$ 199	\$ 199	\$ 205	\$ 205



Tennessee Tech University

	FY 2014-15		FY 2015-16	
	Base Hours	Hours > Base	Base Hours	Hours > Base
Undergraduate				
In-State	\$ 257	\$ 51	\$ 285	\$ 57
Incr. Amount			\$ 28	\$ 6
Incr. Percent			10.9%	11.8%
Out-of-State	\$ 625	\$ 125	\$ 643	\$ 129
Incr. Amount			\$ 18	\$ 4
Incr. Percent			2.9%	3.2%
Graduate				
In-State	\$ 412	\$ 82	\$ 447	\$ 89
Incr. Amount			\$ 35	\$ 7
Incr. Percent			8.5%	8.5%
Out-of-State	\$ 687	\$ 137	\$ 706	\$ 141
Incr. Amount			\$ 19	\$ 4
Incr. Percent			2.8%	2.9%
Regents On-line Degree Program				
Undergraduate & Graduate	\$ 103	\$ 103	\$ 114	\$ 114
E-Rate				
Undergraduate	\$ 129	\$ 129	\$ 143	\$ 143
Graduate	\$ 206	\$ 206	\$ 224	\$ 224



University of Memphis

	FY 2014-15		FY 2015-16	
	Base Hours	Hours > Base	Base Hours	Hours > Base
Undergraduate				
In-State	\$ 294	\$ 59	\$ 305	\$ 61
Incr. Amount			\$ 11	\$ 2
Incr. Percent			3.7%	3.4%
Out-of-State	\$ 488	\$ -	\$ 488	\$ -
Incr. Amount			\$ -	\$ -
Incr. Percent			0.0%	0.0%
Graduate				
In-State	\$ 461	\$ 92	\$ 479	\$ 96
Incr. Amount			\$ 18	\$ 4
Incr. Percent			3.9%	4.3%
Out-of-State	\$ 488	\$ -	\$ 488	\$ -
Incr. Amount			\$ -	\$ -
Incr. Percent			0.0%	0.0%
Regents On-line Degree Program				
Undergraduate & Graduate	\$ 118	\$ 118	\$ 122	\$ 122
E-Rate				
Undergraduate	\$ 147	\$ 147	\$ 153	\$ 153
Graduate	\$ 231	\$ 231	\$ 240	\$ 240



Professional Schools

	FY 2014-15		FY 2015-16	
	Base Hours	Hours > Base	Base Hours	Hours > Base
University Of Memphis				
College of Law				
In-State (annual)	\$ 15,992	N/A	\$ 16,312	N/A
Increase				
Amount			\$ 320	
Percent			2.0%	
Out-of-State (annual)	\$ 7,860	N/A	\$ 7,860	N/A
Increase				
Amount			\$ -	
Percent			0.0%	
East Tennessee State University				
College of Medicine				
In-State (annual)	\$ 29,160	N/A	\$ 30,036	N/A
Increase				
Amount			\$ 876	
Percent			3.0%	
Out-of-State (annual)	\$ 30,278	N/A	\$ 31,186	N/A
Increase				
Amount			\$ 908	
Percent			3.0%	
College of Pharmacy				
In-State (annual)	\$ 32,710	N/A	\$ 34,018	N/A
Increase				
Amount			\$ 1,308	
Percent			4.0%	



Community Colleges

	FY 2014-15		FY 2015-16	
	Base Hours	Hours > Base	Base Hours	Hours > Base
Undergraduate				
In-State	\$ 147	\$ 29	\$ 152	\$ 30
Incr. Amount			\$ 5	\$ 1
Incr. Percent			3.4%	3.4%
Out-of-State	\$ 461	\$ 92	\$ 475	\$ 95
Incr. Amount			\$ 14	\$ 3
Incr. Percent			3.0%	3.3%
Regents On-line Degree Program				
Undergraduate	\$ 59	\$ 59	\$ 61	\$ 61
E-Rate				
Undergraduate	\$ 74	\$ 74	\$ 76	\$ 76



Colleges of Applied Technology

	<u>FY 2014-15</u>	<u>FY 2014-15</u>
Tri-mester Rate	\$ 1,065	\$ 1,108
Increase		
Amount		\$ 43
Percent		4.0%



Recommended Action

Motion that the Committee recommends to the Board that the maintenance fee, tuition, Regents On-line Degree Program, and E- Rates presented on pages 22 through 31 be adopted for FY 2015-16.



INCIDENTAL FEE REQUEST

May 15, 2015

TENNESSEE BOARD OF REGENTS
STATE UNIVERSITY & COMMUNITY COLLEGE SYSTEM OF TENNESSEE



ETSU Mandatory Fee Request

- Proposal: fee increase to support additional student activity programming and renovation to Culp Student Center
- March 24, 2015: SGA Resolution Approved, 23-0-1
 - Requesting Board approve fee to support both renovation of Culp Center and enhancement to student activity funding



ETSU

Culp University Center

- Completed in 1976 @ 272,500 gross square feet
 - Student & Administrative space
 - 35% of space allocated to student uses
 - 2008: \$6.5m renovation focused on lighting, HVAC, floor coverings, sound systems
 - Other Capital: replacement of roof & upgrade of electrical systems



Chronology

- **December 17, 2012:** Culp Renovation Meeting, Student Affairs Conference Room
- **January 10, 2013:** Participation in a webinar on Renovating Student Unions, Forum
- **January 18, 2013:** Culp Renovation Meeting, East Tennessee Room
- SGA hosted Student Focus Groups on Culp Renovation
 - **November 20, 2013,** Meeting Room 3
 - **November 22, 2013,** Meeting Room 3
- **November 14-November 24, 2013:** SGA sponsored Culp Renovation Survey
- **Spring 2014 to Fall 2014 (ongoing):** SGA Discussion on results of Culp Renovation Survey
- **December 18, 2014:** SGA Executive Branch requested meeting to discuss Culp Renovation, Student Affairs
- **January 14, 2015:** Culp Renovation Meeting, Student Affairs Conference Room
- **January 15, 2015:** SGA Executive Meeting with President Noland to discuss SGA plans to move forward with Culp proposal
- **January 21, 2015:** Culp Renovation Meeting, Student Affairs Conference Room
- **January 30, 2015:** Culp Renovation Meeting, Student Affairs Conference Room
- **February 02, 2015:** Culp Renovation Meeting, Student Affairs Conference Room
- **February 10, 2015:** SGA Meeting with Food Service, Food Service Office
- **February 13, 2015:** Culp Renovation Meeting, Meeting Room 1
- **March 6, 2015:** Culp Renovation Meeting, Facilities Conference Room
- **March 13, 2015:** Culp Renovation Meeting, Forum
- **March 17, 2015:** e-mail from SGA President to Student Body informing of them of Student Forums to present renovation plans; Culp Legislation presented to SGA Senate
- **March 18, 2015:** Student Open Forum on Renovations, 9:00 a.m. and 7:00 p.m., East Tennessee Room
- **March 22, 2015:** Article in *East Tennessean* regarding the Student Forums held
- **March 24, 2015:** SGA Meeting, considered the Culp Renovation legislation; Approved 23-0-1



ETSU

Culp University Center

- Renovations Proposed (\$40.5 million)
 - Renovate 91,000 GSF of existing student space
 - Construct 46,000 GSF of new student space
- Nature of Renovations
 - Food service option additions
 - Student media areas
 - Student lounge space
 - Student organization resource center
 - Gaming/recreation area
 - Outdoor seating areas
 - Circulation improvements
- At completion, 60% of space will be allocated to student uses



How does the D. P. Culp University Center project drive student success?

The renovation and expansion of the D. P. Culp University Center will better equip the facility to serve its intended role as a critical hub of student service, support, and engagement. The building addition will create a major connection point through the east and west side of campus, and will better integrate the Sherrod Library, D. P. Culp Center, and a future one stop shop for student service. The building renovation will enhance academic support spaces and activities. It will include the relocation of a major student computer lab to the library, which will combine expanded computer access with library resources and support. The renovation will support a multidimensional student media center that will provide interdisciplinary learning experiences for students engaged in student media, and the renovation will provide improved gathering spaces for study and group collaboration.

The renovation will enhance student engagement by providing more space to support student organizations, leadership programs, and community service opportunities. The renovation will improve food service options, lounge spaces, indoor/outdoor meeting spaces, all of which will promote interaction and connection among the students. The improvements and program enhancements will bring more students into a facility that houses key support services, such as the university's advisement center, multicultural center, student organization resource center, and the counseling center.

The fee will also be used to support expanded building operations and enhance services and programming from departments and organizations that contribute to the success and engagement of students, such as Adult, Commuter, and Transfer Services, the Office of Multicultural Affairs, and Community Service Programs. The funds will be used to enhance social and educational programming on the campus, increase evening and weekend activities, and create a more engaging campus climate. In summary, the Culp project has been planned as a key initiative the institution's student success plan.



ETSU Mandatory Fee Request

- Implementation of Requested Fee Increase
 - Fall 2015: Freshman & Sophomores
 - Fall 2016: Freshman, Sophomores, & Juniors
 - Fall 2017: All Students

	Current Annual Fee	Increase	Proposed Fee	Revenue Generated
Student Activity Fee	\$ 236	\$ 50	\$ 286	\$ 249,000
Debt Service Fee	\$ 230	\$ 240	\$ 470	\$ 1,195,000
Proposed Adjustment	\$ 466	\$ 290	\$ 756	\$ 1,444,000



NEXT STEPS

May 15, 2015

TENNESSEE BOARD OF REGENTS
STATE UNIVERSITY & COMMUNITY COLLEGE SYSTEM OF TENNESSEE



Next Steps

- June 18th Committee Meeting
 - Consideration of Minutes from Meetings on April 8th, May 7th, and May 27th
 - Policy Change Recommendations
 - Recommended Budget Actions
 - Estimated FY 2014-15
 - Proposed FY 2015-16
- June 19th Board Meeting
 - Consideration of Committee's June 18th Minutes Which Include the Committee's Recommended Maintenance Fee, Tuition, and Budget Actions



End of Materials

May 15, 2015

TENNESSEE BOARD OF REGENTS
STATE UNIVERSITY & COMMUNITY COLLEGE SYSTEM OF TENNESSEE

